

Journal of Dentistry and Oral Hygiene

Volume 5 Number 7 July 2013

ISSN 2006-9871



*Academic
Journals*

ABOUT JDOH

The **Journal of Dentistry and Oral Hygiene (JDOH)** is published monthly (one volume per year) by Academic Journals.

Journal of Dentistry and Oral Hygiene (JDOH) is an open access journal that provides rapid publication (monthly) of articles in all areas of the subject such as endodontics, prosthodontics, Oral Pathology, dento-maxillofacial Radiology, periodontics etc.

The Journal welcomes the submission of manuscripts that meet the general criteria of significance and scientific excellence. Papers will be published shortly after acceptance. All articles published in JDOH are peer-reviewed.

Submission of Manuscript

Submit manuscripts as e-mail attachment to the Editorial Office at: jdoh@academicjournals.org. A manuscript number will be mailed to the corresponding author shortly after submission.

The Journal of Dentistry and Oral Hygiene will only accept manuscripts submitted as e-mail attachments.

Please read the **Instructions for Authors** before submitting your manuscript. The manuscript files should be given the last name of the first author.

Editors

Dr. Denise Evans

*University of Johannesburg
4 Vlei street, Southcrest Alberton, 1449 Gauteng
South Africa.*

Prof. Azza A El-Housseiny

*Faculty of Dentistry, Alexandria university
1 Shamplion St, Massarita, Alexandria.
Egypt .*

Dr. Fawad Javed

*Karolinska Institutet
Box 4064, SE 14104 Huddinge. Stockholm.
Sweden*

Dr. Muneer Gohar Babar

*International Medical University
No. 126, Jalan 19/155B, Bukit Jalil, 57000 Kuala
Lumpur,
Malaysia.*

Dr. Janine Owens

*University of Sheffield, Department of Oral Health
and Development
Claremont Crescent, Sheffield S10 2TU
United Kingdom*

Dr. Satyabodh S.Guttal

*SDM College of Dental Sciences and Hospital
Sattur, Dharwad
India .*

Prof. E.J. Sauvetre

*Université Libre de Bruxelles (Faculty of Medicine)
10 rue bavastro 06300 Nice France
France.*

Dr. Olfat Shaker

*Faculty of Medicine Cairo University
Department of Medical Biochemistry,
Egypt .*

Prof. Ayyaz Ali Khan

*Riphah International University
IIDC&H, Off 7th Ave., G-7/4, Islamabad,
Pakistan.*

Dr. Pei-Yi Chu

*Diagnostic and research pathologist,
Department of Surgical Pathology,
Changhua Christian Hospital/
135 Nan-Shiao Street, Changhua 500-06,
Taiwan.*

Dr. Abeer Gawish

*Al-Azhar University Faculty Of Dental Medicine
4 elsheikh Makhlof Street. Misr Elgedida, Cairo
Egypt.*

Dr. Murali Srinivasan

*Jebel Ali Hospital
PO Box 49207, Dubai,
UAE .*

Dr. Scardina Giuseppe Alessandro

*University of Palermo Department of Oral Sciences
"G. Messina"
Via del Vespro, 129 90127 Palermo
Italy.*

Prof. Hussam M. Abdel-Kader

*Faculty of Dental Medicine, AlAzhar University, Cairo,
Egypt Madent Nasr 11884, Cairo,
Egypt.*

Dr. Mahmoud K. ALiri,

*BD-OmS, PhD, FDS RCS (England),
Jordanian Board, DCE (Ireland).
Associate Professor and Consultant
Faculty of Dentistry, The University of Jordan,
P.O. Box 710193, Amman 11171,
Jordan .*

Dr. Imtiaz Wani

*S.M.H.S Hospital
Srinagar, Kashmir,
India.*

Editorial Board

Dr. Santhosh Kumar

*Darshan Dental College and Hospital
Udaipur,
India .*

Prof. Sharon Struminger

*2350 Broadhollow Road Farmingdale, NY 11735/
Farmingdale State College of State
University of New York
USA.*

Dr. Saurab Bither

*Christain Dental College
C.M.C, Ludhiana. Punjab.
India.*

Dr. Ramesh Chowdhary

*HKE's S.Nijalingappa Institute of Dental Sciences and
Research
Ring Road, Gulbarga-585104,
India.*

Instructions for Author

Electronic submission of manuscripts is strongly encouraged, provided that the text, tables, and figures are included in a single Microsoft Word file (preferably in Arial font).

The **cover letter** should include the corresponding author's full address and telephone/fax numbers and should be in an e-mail message sent to the Editor, with the file, whose name should begin with the first author's surname, as an attachment.

Article Types

Three types of manuscripts may be submitted:

Regular articles: These should describe new and carefully confirmed findings, and experimental procedures should be given in sufficient detail for others to verify the work. The length of a full paper should be the minimum required to describe and interpret the work clearly.

Short Communications: A Short Communication is suitable for recording the results of complete small investigations or giving details of new models or hypotheses, innovative methods, techniques or apparatus. The style of main sections need not conform to that of full-length papers. Short communications are 2 to 4 printed pages (about 6 to 12 manuscript pages) in length.

Reviews: Submissions of reviews and perspectives covering topics of current interest are welcome and encouraged. Reviews should be concise and no longer than 4-6 printed pages (about 12 to 18 manuscript pages). Reviews are also peer-reviewed.

Review Process

All manuscripts are reviewed by an editor and members of the Editorial Board or qualified outside reviewers. Authors cannot nominate reviewers. Only reviewers randomly selected from our database with specialization in the subject area will be contacted to evaluate the manuscripts. The process will be blind review.

Decisions will be made as rapidly as possible, and the journal strives to return reviewers' comments to authors as fast as possible. The editorial board will re-review manuscripts that are accepted pending revision. It is the goal of the JDOH to publish manuscripts within weeks after submission.

Regular articles

All portions of the manuscript must be typed double-spaced and all pages numbered starting from the title page.

The Title should be a brief phrase describing the contents of the paper. The Title Page should include the authors' full names and affiliations, the name of the corresponding author along with phone, fax and E-mail information. Present addresses of authors should appear as a footnote.

The Abstract should be informative and completely self-explanatory, briefly present the topic, state the scope of the experiments, indicate significant data, and point out major findings and conclusions. The Abstract should be 100 to 200 words in length.. Complete sentences, active verbs, and the third person should be used, and the abstract should be written in the past tense. Standard nomenclature should be used and abbreviations should be avoided. No literature should be cited.

Following the abstract, about 3 to 10 key words that will provide indexing references should be listed.

A list of non-standard **Abbreviations** should be added. In general, non-standard abbreviations should be used only when the full term is very long and used often. Each abbreviation should be spelled out and introduced in parentheses the first time it is used in the text. Only recommended SI units should be used. Authors should use the solidus presentation (mg/ml). Standard abbreviations (such as ATP and DNA) need not be defined.

The Introduction should provide a clear statement of the problem, the relevant literature on the subject, and the proposed approach or solution. It should be understandable to colleagues from a broad range of scientific disciplines.

Materials and methods should be complete enough to allow experiments to be reproduced. However, only truly new procedures should be described in detail; previously published procedures should be cited, and important modifications of published procedures should be mentioned briefly. Capitalize trade names and include the manufacturer's name and address. Subheadings should be used. Methods in general use need not be described in detail.

Results should be presented with clarity and precision. The results should be written in the past tense when describing findings in the authors' experiments. Previously published findings should be written in the present tense. Results should be explained, but largely without referring to the literature. Discussion, speculation and detailed interpretation of data should not be included in the Results but should be put into the Discussion section.

The Discussion should interpret the findings in view of the results obtained in this and in past studies on this topic. State the conclusions in a few sentences at the end of the paper. The Results and Discussion sections can include subheadings, and when appropriate, both sections can be combined.

The Acknowledgments of people, grants, funds, etc should be brief.

Tables should be kept to a minimum and be designed to be as simple as possible. Tables are to be typed double-spaced throughout, including headings and footnotes. Each table should be on a separate page, numbered consecutively in Arabic numerals and supplied with a heading and a legend. Tables should be self-explanatory without reference to the text. The details of the methods used in the experiments should preferably be described in the legend instead of in the text. The same data should not be presented in both table and graph form or repeated in the text.

Figure legends should be typed in numerical order on a separate sheet. Graphics should be prepared using applications capable of generating high resolution GIF, TIFF, JPEG or Powerpoint before pasting in the Microsoft Word manuscript file. Tables should be prepared in Microsoft Word. Use Arabic numerals to designate figures and upper case letters for their parts (Figure 1). Begin each legend with a title and include sufficient description so that the figure is understandable without reading the text of the manuscript. Information given in legends should not be repeated in the text.

References: In the text, a reference identified by means of an author's name should be followed by the date of the reference in parentheses. When there are more than two authors, only the first author's name should be mentioned, followed by 'et al'. In the event that an author cited has had two or more works published during the same year, the reference, both in the text and in the reference list, should be identified by a lower case letter like 'a' and 'b' after the date to distinguish the works.

Examples:

Abayomi (2000), Agindotan et al. (2003), (Kelebeni, 1983), (Usman and Smith, 1992), (Chege, 1998;

1987a,b; Tijani, 1993,1995), (Kumasi et al., 2001)
References should be listed at the end of the paper in alphabetical order. Articles in preparation or articles submitted for publication, unpublished observations, personal communications, etc. should not be included in the reference list but should only be mentioned in the article text (e.g., A. Kingori, University of Nairobi, Kenya, personal communication). Journal names are abbreviated according to Chemical Abstracts. Authors are fully responsible for the accuracy of the references.

Examples:

Chikere CB, Omoni VT and Chikere BO (2008). Distribution of potential nosocomial pathogens in a hospital environment. *Afr. J. Biotechnol.* 7: 3535-3539.

Moran GJ, Amii RN, Abrahamian FM, Talan DA (2005). Methicillinresistant *Staphylococcus aureus* in community-acquired skin infections. *Emerg. Infect. Dis.* 11: 928-930.

Pitout JDD, Church DL, Gregson DB, Chow BL, McCracken M, Mulvey M, Laupland KB (2007). Molecular epidemiology of CTXM-producing *Escherichia coli* in the Calgary Health Region: emergence of CTX-M-15-producing isolates. *Antimicrob. Agents Chemother.* 51: 1281-1286.

Pelczar JR, Harley JP, Klein DA (1993). *Microbiology: Concepts and Applications.* McGraw-Hill Inc., New York, pp. 591-603.

Short Communications

Short Communications are limited to a maximum of two figures and one table. They should present a complete study that is more limited in scope than is found in full-length papers. The items of manuscript preparation listed above apply to Short Communications with the following differences: (1) Abstracts are limited to 100 words; (2) instead of a separate Materials and Methods section, experimental procedures may be incorporated into Figure Legends and Table footnotes; (3) Results and Discussion should be combined into a single section.

Proofs and Reprints: Electronic proofs will be sent (e-mail attachment) to the corresponding author as a PDF file. Page proofs are considered to be the final version of the manuscript. With the exception of typographical or minor clerical errors, no changes will be made in the manuscript at the proof stage.

Fees and Charges: Authors are required to pay a \$550 handling fee. Publication of an article in the Journal of Dentistry and Oral Hygiene is not contingent upon the author's ability to pay the charges. Neither is acceptance to pay the handling fee a guarantee that the paper will be accepted for publication. Authors may still request (in advance) that the editorial office waive some of the handling fee under special circumstances.

Copyright: © 2013, Academic Journals.

All rights Reserved. In accessing this journal, you agree that you will access the contents for your own personal use but not for any commercial use. Any use and or copies of this Journal in whole or in part must include the customary bibliographic citation, including author attribution, date and article title.

Submission of a manuscript implies: that the work described has not been published before (except in the form of an abstract or as part of a published lecture, or thesis) that it is not under consideration for publication elsewhere; that if and when the manuscript is accepted for publication, the authors agree to automatic transfer of the copyright to the publisher.

Disclaimer of Warranties

In no event shall Academic Journals be liable for any special, incidental, indirect, or consequential damages of any kind arising out of or in connection with the use of the articles or other material derived from the JDOH, whether or not advised of the possibility of damage, and on any theory of liability.

This publication is provided "as is" without warranty of any kind, either expressed or implied, including, but not limited to, the implied warranties of merchantability, fitness for a particular purpose, or non-infringement. Descriptions of, or references to, products or publications does not imply endorsement of that product or publication. While every effort is made by Academic Journals to see that no inaccurate or misleading data, opinion or statements appear in this publication, they wish to make it clear that the data and opinions appearing in the articles and advertisements herein are the responsibility of the contributor or advertiser concerned. Academic Journals makes no warranty of any kind, either express or implied, regarding the quality, accuracy, availability, or validity of the data or information in this publication or of any other publication to which it may be linked.

Journal of Dentistry and Oral Hygiene

Table of Content: Volume 5 Number 7 July 2013

ARTICLES

Research Articles

Dental erosion in patients with gastro esophageal reflux disease (GERD) 62

Golsa Alavi, Ali A. Alavi, Mehdi Saberfiroozi, Amir H. Sarbazi and Mehran Motamedi

In vitro assessments of white-spot lesions treated with NaF plus tricalcium phosphate (TCP) toothpastes using microtomography (micro-CT) 68

Makoto Asaizumi, Robert L. Karlinsey, Allen C. Mackey, Tomoaki Kato and Tetsuya Kuga

Full Length Research Paper

Dental erosion in patients with gastro esophageal reflux disease (GERD)

Golsa Alavi¹, Ali A. Alavi¹, Mehdi Saberfiroozi², Amir H. Sarbazi¹ and Mehran Motamedi^{1*}

¹Department of Operative Dentistry, School of Dentistry, Shiraz University of Medical Sciences, Shiraz, Iran.

²Department of Gastroenterology, School of Medicine, Shiraz University of Medical Sciences, Shiraz, Iran.

Accepted 3 January, 2012

The aim of this study was to investigate the effects of gastro esophageal reflux disease (GERD) on dental erosion. The study group comprised 140 patients with the average age of 30 to 50 years old. All subjects completed a detailed questionnaire regarding dental and medical situations. Dental examination was performed by two examiners agreement method, and endoscopy was done by a gastroenterologist. Patients were divided into three groups of healthy, suspected of GERD, and with GERD. Data were collected and analyzed by Chi-Square test. The prevalence of dental erosion in GERD patients (22.6%) was found to be higher than suspected (5.3%) and healthy (7%) subjects. This study has showed that GERD patients are at increased risk of developing dental erosion compared to healthy subjects.

Key words: Dental erosion, reflux, heart burn.

INTRODUCTION

Gastroesophageal reflux disease (GERD) is a situation in which the esophagus is injured or swelled due to the return of stomach acid fluids. Esophagus is located behind the heart, so the term "heart burn" is usually used to describe the condition (Shi et al., 1995). Most of the patients complained of heart burn at least once a month, and a few percent have more incidents even up to once a day. More than 36% of the United States adult population and its prevalence increases after the age of 40, and not only the adults, but also the children and infants, might suffer from the disease (Wienbeck and Bamert, 1989; Sonnenberg and El-Serag, 1999). Stomach produces hydro chloric (HCl) acid in order to digest the foods and the epithelial cells lining its internal surface are protected against this acid by extensive mucosal secretions. Esophageal epithelial cells lack this defensive mechanism and are prone to injury from the acid. In normal conditions, a muscular ring (sphincter) in the lowest end

of the esophagus, located at the junction of the esophagus and the stomach, prevents acid from returning upwards. During swallowing, this sphincter is relax, allowing the food enter the stomach. But after swallowing, this sphincter closes the way to prevent the food from returning to the esophagus. In GERD, the sphincter is relaxed even during swallowing, so, stomach fluids containing strong acids, injure esophageal lining cells. Etiology of the problem relates to factors which help relaxing the described sphincter. It includes life style, tobacco or alcohol abuse, obesity, and also some drugs including calcium (Ca) channel blockers, theophillin, nitrates and antihistamines. In addition, some foods like fried foods, chocolates, onion and garlic, caffeinated drinks, acidic food, tomato, sour foods and mint can attribute to the disease. Habits such as high volumes of food intake especially just before sleeping, and diseases such as hiatal hernia, diabetes and pregnancy are also risk factors (Barham et al., 1995).

*Corresponding author. E-mail: mmotamedi@sums.ac.ir.

Symptoms of GERD include heart burn, acid reflux, difficulty in swallowing (dysphasia) which often worsens after having a meal and lasts for 2 h, although sports or heavy activities do not start or worsen the situation, but sleeping and bending the body downwards will.

GERD has some oral and dental complications and the most common is increased dental erosion (Wienbeck and Bamert, 1989; Sonnenberg and El-Serag, 1999). Dental erosion is irreversible loss of enamel due to the chemical reactions not related to the bacterial actions (Sullivan and Kramer, 1983). Tooth enamel is the hardest substance in the whole body, but it can be dissolved chemically in a solution. Acids causing dental erosion may have originated from the inside of the body (like reflux or vomiting) or from the outside (like acidic drinks or fruits). Unlike attrition which occurs on specific locations, erosion affects all surfaces of the teeth and can lead to discoloration, tooth sensitivity, shortened or rounded teeth, fractured teeth, and even tooth loss.

Dentists often ask the patient's medical history and GERD is in concern because of its dental complications. With the cooperation of the dentist and the gastroenterologist, in addition to identifying the disease, teeth could be maintained for a longer period of time by an appropriate treatment plan (Lazarchik and Filler, 1997).

MATERIALS AND METHODS

This study was performed based on:

1. All the patients who were referred to the endoscopy center of the Namazi Hospital, and were visited by two dentists; questionnaire (Appendix 1) was filled by dentists.
2. Then, questionnaire (Appendix 2) was filled by the patient while being observed by an endoscopy center's specialist.
3. Endoscopy was performed for all the patients by a specialist.
4. Questionnaires (Appendices 1 and 2) were evaluated by two dentists and analyzed by a statistics specialist.

Current study evaluated the possible relation between the dental erosion and GERD. 140 patients from department of endoscopy, Shiraz Namazi Hospital were evaluated. Two separate questionnaires were designed for each subject. The first included personal information, oral hygiene, and dental evaluation. Dental evaluation was performed concerning caries, extracted teeth, restored teeth, replaced teeth and gingival bleeding done by two examiners with examiner agreement method. Dental radiographies were not taken and inter-proximal caries were excluded from the study. The second questionnaire included personal information and clinical data regarding reflux. The gastroenterologist after endoscopy, divided the patients into three groups – healthy (71 subjects), suspected to reflux (38 subjects), and having reflux (31 subjects).

After coding the questionnaires, data were transferred to the SPSS (statistical package for social science) software for analyze by chi-square test. Also, statistical analyses including cross tabulation test were done to compare the variants and discover the correlations. The statistical significance was defined as $P < 0.05$.

RESULTS

In the first group, 5 patients (7%) had dental erosion whereas

the number of subjects having dental erosion in the second and third group was 2 (5.3%) and 7 (22.6%), respectively (Table 1). Among the 3 groups, according to chi-square test, the P-value was less than 0.05 in group 3, indicating the statistical relationship between the reflux and dental erosion, meaning that if a patient has GERD, the risk of dental erosion will increase (Table 2 and Figure 1).

DISCUSSION

Acid have destructive effects on the tooth structure and can be originated from intrinsic or extrinsic sources. If the acid contacts the tooth for a longer period than the tolerance of the enamel, enamel will be demineralized and the process is called dental erosion. Dentists discovered long ago that children suffering from reflux and recurrent vomits have this lesion and this has been observed in adults too. In a study by Ersin et al. (2006) on GERD effect on dental erosion, caries and saliva on 38 children, it was found that in the patients having GERD, incidence of erosion, salivary yeast and MS colonization was apparently higher than the normal population, in agreement with current study on adult subjects. Dental Practice Education Research Unit (2003) in a recommended oral care program has stated that patients with dental erosion of intrinsic origin often suffer from GERD and are under treatment, suggesting these lesions should be treated. David (2006) believes that GERD can occur at any age and might cause erosion of the enamel because of hydrochloric acid contact with the enamel when the stomach contents return into the mouth. Family Gentle Dental Care (2008) has also agreed to our findings. American Dental Association (2008) named some factors which start or worsen dental erosion: drinks, GERD and maintaining aspirin and vitamin C tablets in the mouth for long periods of time. According to Moazzez (2005), acid reflux in GERD patients can lead to erosion, and gum chewing which increases swallowing cycles, can help empty esophagus and thus reduce acidic postprandial esophageal reflux. In spite of most dentists who believe GERD as the major etiologic factor in formation of dental erosion, results from studies are difficult to compare because of scoring system, samples, and examiners. Males have more dental erosions than the females and maxillary anterior teeth are the mostly affected teeth (Academy of General Dentistry [AGD impact], 2007).

Imfeld (1996) has suggested the prevention of dental erosion by reducing acidic foods consumption, increasing saliva, fluoride administration, having foods with buffering activity, not to use materials and instruments which may erode the teeth and finally, appropriate restorations. Chu et al. (2002) have also evaluated treatment modalities for erosion with regard to the clinical and material consideration in order to achieve healthy, esthetic and functional teeth. Yip et al. (2002) have showed that erosion in the

Table 1. Reflux* erosion cross tabulation.

Reflux	Erosion		Total
	0	1	
Count	66	5	71
% within reflux	93.0	7.0	100.0
Group 1 % within erosion	52.4	35.7	50.7
% of total	47.1	3.6	50.7
Residual	2.1	-2.1	-
Count	36	2	38
% within reflux	94.7	5.3	100.0
Group 2 % within erosion	28.6	14.3	27.1
% of total	25.7	1.4	27.1
Residual	1.8	-1.8	-
Count	24	7	31
% within reflux	77.4	22.6	100.0
Group 3 % within erosion	19.0	50.0	22.1
% of total	17.1	5.0	22.1
Residual	-3.9	3.9	-
Count	126	14	140
% within reflux	90.0	10.0	100.0
Total % within erosion	100.0	100.0	100.0
% of total	90.0	10.0	100.0

Group 1: healthy; Group 2: suspected to reflux; Group 3: having reflux.

Table 2. Chi-square tests.

Variable	Value	df	Asymp. Sig. (2-sided)	Exact Sig. (2-sided)	Exact Sig. (1-sided)
Pearson chi-square	7.002 ^a	1	0.008	-	-
Continuity correction ^b	5.322	1	0.021	-	-
Likelihood ratio	5.929	1	0.015	-	-
Fisher's exact test	-	-	-	0.015	0.015
Linear-by-linear association	6.952	1	0.008	-	-
No. of valid cases ^b	140	-	-	-	-

^a1 cell (25.0%) that have expected count less than 5. The minimum expected count is 3.10; ^bComputed only for a 2x2 table.

United States is less common than the United Kingdom and Europe, and is a major factor in tooth destruction in young population. They discovered acidic foods and reflux from the stomach as primary etiologic factors for emphasizing on prevention rather than treatment.

Conclusion

This study was performed to evaluate oral manifestations, especially dental erosion in relation to GERD in Shiraz Namazi Hospital to which many patients are referred from

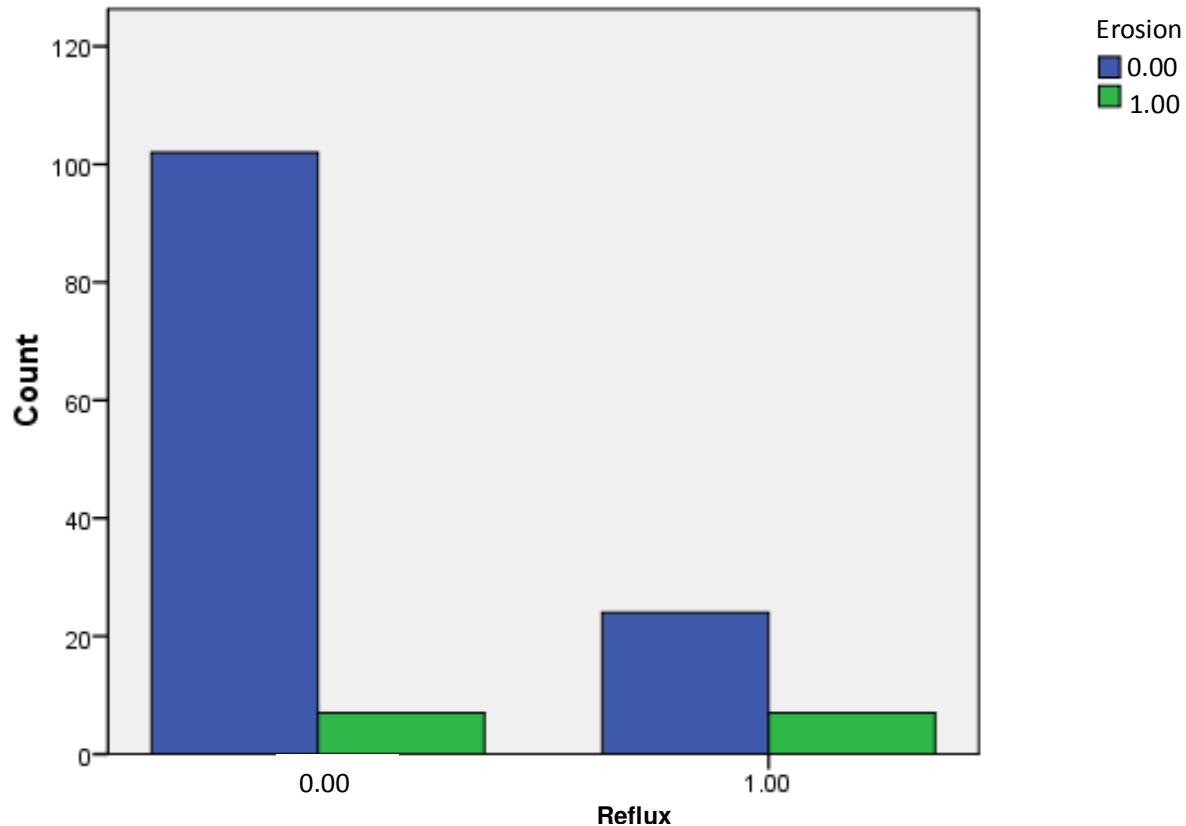


Figure 1. Chi-square bar chart.

local and neighboring cities. In this study, 22.6% of subjects with GERD also had dental erosion, and with p value of less than 0.05, a statistical relationship was found between GERD and dental erosion.

REFERENCES

- Dental Practice Education Research Unit (2003). Colgate Oral Care. Available at: www.adelaide.edu.au/socprev-dent/dperu
- AGD Impact (2007). Know Your Teeth. AGD Publication.
- Barham CP, Gotley DC, Mills A, Alderson D (1995). Precipitating causes of acid reflux episodes in ambulant patients with gastroesophageal reflux disease. *Gut* 36:505.
- Chu FC, Siu AS, Newsome PR, Chow TW, Amales RJ (2002). Restorative management of the worn dentition: 2. Localized anterior toothwear. *Dent. Update* 29(5):214-222.
- David DR (2006). Abfraction. In: Education Center: Dental Conditions, Dental1.org. Available at: <http://www.dental1.org/care/dentalcondition20.cfm/33>.
- Family Gentle Dental Care (2008). Athletes and decay. Available at: <http://www.dentalgentlecare.com/athlet.htm>
- Ersin NK, Oncag O, Turgor G, Aydogdu, Hilmioglu S (2006). Oral and dental manifestations of gastroesophageal reflux disease in children: A preliminary study. *Pediatr. Dent.* 28:279-284.
- Imfeld T (1996). Prevention of progression of dental erosion by professional and individual prophylactic measures. *Eur. J. Oral Sci.* 104(2 (Pt 2)):215-220.
- Moazzez R (2005). The effect of chewing sugar-free gum in gastroesophageal reflux. *J. Dent. Res.* 84(11):1062-1065.
- Shi G, Bruley des VS, Scarpkjnato C (1995). Reflux related symptoms in patients with normal oesophageal exposure to acid. *Gut* 37:457.
- Sonnenberg A, El-Serag HB (1999). Clinical epidemiology and natural history of gastroesophageal reflux disease. *Yale J. Biol. Med.* 72:81.
- Sullivan RE, Kramer WS (1983). Iatrogenic erosion of teeth. *ASDC J. Dent. Child* 50:192-196.
- Lazarchik DA, Filler SJ (1997). Effects of gastroesophageal reflux on the oral cavity. *Am. J. Med.* 103(5A):107S-113S.
- Wienbeck MI, Bamert J (1989). Epidemiology of reflux disease and reflux esophagitis. *Scand. J. Gastroenterol. Suppl.* 156:7.
- Yip HK, Smales RJ, Kaidonis JA (2002). University of Hong Kong. Management of tooth tissue loss from erosion. *Quint. Int.* 33:516-520.

Appendix 1

First Name: Last Name: Date of birth:

Age: occupation: Degree of education: Place of birth:

1. How many times you brush your teeth during a day?

One time two times sometimes I don't brush my teeth

2. How many times do you use mouthwash during a week?

One time two times sometimes I don't use mouthwash

3. How many times do you go to a dentist during a year?

One time two times more than two times never

4. Have you ever been under radiotherapy?

Yes No

5. Which drugs do you consume?

Caries: NO Yes

Erosion: NO Yes

Filling: NO Yes

Extraction: NO Yes

Partial:

Denture crown: NO Yes

Bleeding while brushing: NO Yes

Smoker: NO Yes

Drink coke: NO Yes

Systemic disease: NO Yes

Appendix 2

Name and last name..... Cod:

1. Sex: 1- Male <input type="checkbox"/> 2- Female <input type="checkbox"/>				
2. Age: date of birth				
3. Marital status 1- unmarried <input type="checkbox"/> 2- married <input type="checkbox"/>				
4. Address:				
5. Do you suffer regurgitation (Heart burn)? 1- Yes <input type="checkbox"/> 2- No <input type="checkbox"/>				
5/1. If yes, for how long? Months..... years.....				
5/2. If yes, how many times? 1. Once and more daily 2. 3 to 6 times a week 3. Once or twice a week 4. Once or more a month 5. Less than once a month				
5/3. If yes, fill the questionnaire:				
Complaint	Negative	Positive		
		Mild	Moderate	Severe
Heart burn				
Acid reflux				
Food reflux				
Heart burn without cardiac involvement				
Problem in swallowing				
Odynophagial				
Diurnal				
Vomiting				
Nocturnal apnea				
Chronic sore throat				
Nocturnal coughing				
Nocturnal dyspnea				
Whizzing				

Mild: There is no need for treatment; Moderate: Treatment is required but daily activities are not affected; Severe: Permanent treatment is required, daily activities are inhibited.

Full Length Research Paper

***In vitro* assessments of white-spot lesions treated with NaF plus tricalcium phosphate (TCP) toothpastes using microtomography (micro-CT)**

Makoto Asaizumi^{1*}, Robert L. Karlinsey², Allen C. Mackey², Tomoaki Kato³ and Tetsuya Kuga³

¹Dr. Makoto Asaizumi Orthodontic Practice, Ban Bldg. 3F. 1-8 Chiyodacho, Mobara, Chiba 297-0023, Japan.

²Indiana Nanotech, 351 West 10th Street, Suite 309, Indianapolis, IN 46202-4119, USA.

³Dr. Tetsuya Kuga Dental Practice, 924 Kamiichiba, Mutsuzawamachi, Chouseigun, Chiba 299-4403, Japan.

Accepted 23 May, 2013

X-ray microtomography (micro-CT) was used to assess the densities of white-spot lesions (WSL) treated with either a fluoride-free paste, or 0.21 or 1.1% NaF toothpastes containing functionalized tricalcium phosphate (TCP). Bovine enamel specimens were ground, polished and demineralized to form WSL. Specimens (N=10) were treated with one of the following NaF silica-based toothpastes in a 10-day pH cycling model: (1) Tom's of Maine (0% NaF), (2) Clinpro® Tooth Crème (0.21% NaF plus TCP), and (3) Clinpro® 5000 (1.1% NaF plus TCP). Each day consisted of four 2 min treatments, one 4 h acid challenge (pH=5.0), and immersion in artificial saliva (pH=7.0) between these events. After cycling, specimens were analyzed using micro-CT. Statistical analysis (Student's t-test, Welch t-test or Tukey HSD test) was performed at the 95% confidence level. Compared to sound enamel, significantly ($p<0.05$) lower densities in WSL were only found at 24 μm from Clinpro Tooth Crème, and at 36 μm from Clinpro 5000. In contrast, the densities measured at 12, 24, 36, and 48 μm from the fluoride-free toothpaste were lower ($p<0.05$) than sound enamel. Micro-CT analyses revealed NaF toothpastes containing TCP led to increased WSL densities relative to the fluoride-free toothpaste.

Key words: Toothpaste, microtomography (micro-CT), density, remineralization.

INTRODUCTION

Caries decay in tooth enamel remains a worldwide problem, and international global summits are organized to bring research together from locations around the world to examine the evidence and plan strategic efforts to deal with changes in dental caries prevalence (Bagramian et al., 2009). Orthodontists have to select patients very carefully and provide detailed oral hygiene instructions. When combined with dietary advice by an auxiliary at regular intervals throughout treatment, this remains the most cost-effective approach (Mitchell, 1992). However, these approaches may not be sufficient, so other strategies

are often employed, such as at-home topical fluoride formulations. In the United States, dental practitioners may recommend professional-strength 1.1% sodium fluoride tooth pastes for high-risk patients instead of the typical range in fluoride toothpaste (e.g. 0.20 to 0.32% NaF) readily available over-the-counter (Nordström and Birkhed, 2009). For instance, it has been estimated that using professional-strength and over-the-counter fluoride toothpastes leads to an average clinical reduction in caries by approximately 70 and 22%, respectively (Tavss et al., 2003). While such therapies might be recommended for

various at-risk dental populations, from an orthodontic perspective, the inherent cleaning difficulties that are the direct result of the installation of dental appliances could lead to the recommendation of a high-fluoride treatment and/or multiple-step treatment regime to help fight against tooth decay. A relatively new and promising approach is the incorporation of a fluoride-compatible functionalized tricalcium phosphate (TCP) ingredient, which is a hybrid material that comprised of β -tricalcium phosphate and sodium lauryl sulfate, to NaF formulations (Karlinsky and Pfarrer, 2012). In particular, 3 M ESPE's Clinpro® Tooth Crème (0.21% NaF) and Clinpro® 5000 (1.1% NaF), which contain the TCP ingredient, are two of the newest professional-grade toothpastes commercially available. Inclusion of the functionalized TCP ingredient in NaF formulations has been shown to produce stronger, more acid-resistant mineral relative to fluoride alone in laboratory and clinical evaluations (Karlinsky et al., 2010a, b, c, 2009a, b, 2011a; Amaechi et al., 2012).

While transverse microradiography, cross-polarization microscopy and microhardness measurements are valuable in the assessment of remineralization/demineralization, another method of assessing efficacy may be through the use of X-ray microtomography (micro-CT). Micro-CT has been utilized in the observation of time-course changes in remineralization (Nakata et al., 2012) and demineralization (Watanabe et al., 2012); however, the use of micro-CT to assess changes in density of white-spot lesions (WSL) treated with NaF plus TCP systems has not yet been reported. As such, the purpose of this *in vitro* study was to use micro-CT to assess the densities of WSL treated with one of the following dentifrices: a fluoride-free, TCP-free control, or a 0.21 or 1.1% sodium fluoride toothpaste containing TCP. These densities were then compared to those measured for baseline sound and WSL enamel.

MATERIALS AND METHODS

Specimen preparation and WSL formation

Three millimeter enamel cores were drilled from the lingual and labial surfaces of bovine incisors using a bench top drill press (Power Glide, China) affixed with a hollow core drill bit. The cores were embedded into hollowed out acrylic rods using DuraBase resin (Reliance Dental Mfg. Co., Worth, IL, USA). Each specimen was ground by hand with 600 grit SiC sandpaper under water cooling for 30 s using a Leco Spectrum System 1000 Grinder/Polisher (St. Joseph, MI, USA) set to 300 rpm. Then, with the unit set to 200 rpm, each specimen was polished by hand for 1 min using 3 μ m diamond compound in conjunction with microid extender solution (Leco). After rinsing with distilled (DI) water, Vickers surface micro hardness was performed with a 200 gf load and 15 s dwell time (Leco LM247AT micro hardness tester, St. Joseph, MI, USA) to confirm the presence of sound enamel in the polished specimen as indicated by a Vickers hardness number (VHN) of 300 VHN or greater. Acceptable sound specimens were then immersed in vials containing a 0.2 wt% 450 kDa polyacrylic acid (Sigma-Aldrich, St. Louis, MO, USA) and 0.1 M lactic acid (Sigma-Aldrich) solution saturated 50% with hydroxyapatite

(BioRad, Hercules, CA, USA) and adjusted to a pH of 5.0 (Karlinsky and Pfarrer, 2012). These vials were subsequently loaded into an incubator for 40 h at 37°C to establish 'white-spot' (non-cavitated) lesions, the characteristics and histology of which have been discussed in detail previously by White (1987). Briefly, the ensuing caries-like lesions produced by this solution have a dense surface mineral zone approximately 15 μ m thickness, while the lesion depth extends to about 70 μ m (White, 1987). Upon white-spot formation, acceptable baseline surface micro hardness ranging from 25 to 50 VHN (200 gf for 15 s made using a LecoLM247AT indenter) were included in the study.

Treatment groups and study protocol

Bovine enamel specimens (N=10 per group) were then grouped for treatment with one of the following silica-containing dentifrices: toothpaste A, Tom's of Maine fluoride-free toothpaste; toothpaste B, Clinpro® Tooth Crème (0.21% NaF plus TCP); toothpaste C, Clinpro® 5000 (1.1% NaF plus TCP); sound (N=10) and WSL (N=10) specimens were also produced for control purposes.

As outlined in Table 1, the three groups of enamel specimens were then cycled in a remin/demin pH cycling model lasting 10 days. This daily cycling model comprised immersion of inverted specimens in two 2 min treatment events performed an hour apart in the morning, followed by one four-hour polyacrylic acid-lactic acid challenge (15 mL, pH=5.0), and finally two more two-minute treatment events in the afternoon. Specimens were inverted and immersed in artificial saliva in between the daily treatments and acid challenge, as well as overnight (Cate, 1988). The treatments were diluted three-fold with DI water (5 g dentifrice: 10 ml DI water) to create the dentifrice slurry. The treatments and saliva events were magnetically agitated at 300 rpm, while the acid challenge was static. After each treatment and acid challenge, the specimens were rinsed with DI water prior to placement into artificial saliva. Fresh treatment slurries and acid solution were used daily, with the artificial saliva solution changed once daily during the acid challenge.

Micro-CT analysis

A commercial micro-CT (Toscaner-30000 μ hd®, Toshiba, Japan) was used for density measurement at Advanced Composite Technology Center, Japan Aerospace Exploration Agency (JAXA) in Tokyo, Japan. The parameters used to collect micro-CT data, which were optimized based on the best image collected, are shown in Table 2. The 'Laks' (standard parameters) filter function was used to probe densities of specimens. An example view of the micro-CT apparatus and the mounted specimen fixed to the turn table is as shown in Figure 1. From this setup, an example 'field of view' (FOV) image was taken, as shown in Figure 2. The raw data from the 50 bovine enamel specimens (N=10 for each treatment groups, plus 10 baseline sound and 10 baseline WSL) were collected, the window level and width were adjusted, and then they were converted to bitmap files using Toscaner-30000V.17.46 operating software. CTAn® software version 1.12.0 (SkyScan, U.S.A.) was used to determine density based on the 256 gray scale collected from each enamel specimen. Data reconstruction did not include ring free correction (RFC). Five regions of interest (ROI) were randomly selected from one slice picture indicated at the position 50.0 ± 1.0 grayscale value (Figure 3). The grayscale baseline was set at 50.0 points ± 1.0 in ROI based on the brightness generated from the surface in one circular ROI from the top-view perspective as shown in Figure 3. Since the bovine enamel surfaces were not perfectly flat, a small ROI helped to reduce inclinations at the top surface. In doing so the possibilities of involving ring and/or beam-

Table 1. Outline of daily events and duration employed in the remin/demin pH cycling model.

Event	Duration
Treatment 1*	2 min
Saliva, pH=7.0	1 h
Treatment 2	2min
Saliva, pH=7.0	1 h
Acid challenge, pH=5.0	4 h
Saliva, pH=7.0	1 h
Treatment 3	2 min
Saliva, pH=7.0	1 h
Treatment 4	2 min
Saliva, pH=7.0	Overnight

On day one, specimens were pre-conditioned for 1 h in artificial saliva prior to the first treatment. Artificial saliva refreshed daily after the acid challenge. The treatment will consist of a three-fold dilution of test product to water (that is, 5 g paste, 10 ml distilled water). The carbopol-lactic acid system will be used to prepare the artificial lesions and will also be used throughout the 10-day cycling study.

Table 2. Micro-CT exposure parameters.

Parameter	Value
Scan. time (s)	355.8
Recon. time (s)	5.7
Tube voltage (kV)	90.000
Tube current (mA)	385.0000
number of views	800
Integration number	3
FPD gain (pF)	0.25
FPD integration time (ms)	124
FOV (mm)	6.987782
Slice thickness (mm)	0.0120
System name	TOSCANER-30000
Matrix size	1024
Scan mode	Half
Filter function	Laks
RFC	none
Image bias	0
Image slope	100
Data mode	Cone beam
Image direction	From the top
FDD	800.000
FCD	16.500
Window level	767
Window width	1230
Pixel size (mm)	0.0068240059
Magnification ratio	40.92858
Scale (mm)	0.6987782

hardening artifacts in the ROIs also were reduced (Figure 4), and careful consideration was used in selecting ROIs lacking these types of artifacts. Densities were then determined at each slice depth at baseline, z1=12 μ m, z2=24 μ m, z3=36 μ m, z4=48 μ m, z5=60 μ m, z6=72 μ m, and z7=84 μ m. Only toothpaste B group (that is, Clinpro Tooth Crème) had specimens that produced X-rays out of range of the FOV: in this instance, only eight of the ten specimens provided data and were measured at 40 places with 8

slice depths per place for a total of 320 ROIs. Otherwise, all ten specimens from each of the other two toothpaste groups, along with the baseline sound and baseline WSL, were measured at 50 places with 8 slice depths per place for a total of 400 ROIs. To obtain absolute densities, the baseline density was then subtracted from the z1 through z7 densities for each group.

Statistics

All statistics were determined using the statistical package SAS-JMP (SAS Institute, USA). The mean densities at each depth (z1 through z7) for each of the dentifrice groups (A, B and C) along with the two control groups (sound and baseline WSL) were defined as independent variables. Comparisons between groups were made by comparing either the baseline sound enamel or the baseline WSL as the control group to the WSL treated with each of the three toothpastes as the experimental group. Each measurement was considered of equivalent variance so parametric testing (Student's t-test) of the mean densities between the control groups and experimental groups were performed, with $p < 0.05$ considered significant. For multiple comparison testing, one-way analysis of variance (ANOVA) was used followed by Tukey highest significant difference (HSD) test to determine where the differences existed ($p < 0.05$).

RESULTS

Density versus slice depth comparison between sound enamel and toothpaste-treated groups

Mean density values at each slice depth were compared between baseline sound enamel and lesions treated with either Clinpro Tooth Crème (Figure 5), Clinpro 5000 (Figure 6) or Tom's of Maine fluoride-free toothpaste (Figure 7). Significant differences were found between sound enamel and lesions treated with Clinpro Tooth Crème at z2 and z7 (Figure 5). At these slice depths, the mean density of lesions treated with Clinpro Tooth Crème was significantly lower ($p < 0.05$) at z2 and significantly higher ($p < 0.05$) at z7 compared to baseline sound enamel. With respect to comparisons between sound enamel and lesions treated with Clinpro 5000 (Figure 6), the mean density of lesions treated with Clinpro 5000 was significantly lower ($p < 0.05$) than the baseline sound enamel at the z3 slice depth. Comparisons of density values versus slice depth between sound enamel and lesions treated with Tom's of Maine (Figure 7) revealed the density values were significantly lower ($p < 0.05$) at z1, z2, z3 and z4 for lesions treated with Tom's of Maine.

Density versus slice depth comparison between WSL and toothpaste-treated groups

Mean density values at each slice depth were compared between baseline WSL and lesions treated with either Clinpro Tooth Crème (Figure 5), Clinpro 5000 (Figure 6) or Tom's of Maine fluoride-free toothpaste (Figure 7). Significant differences were found between baseline WSL

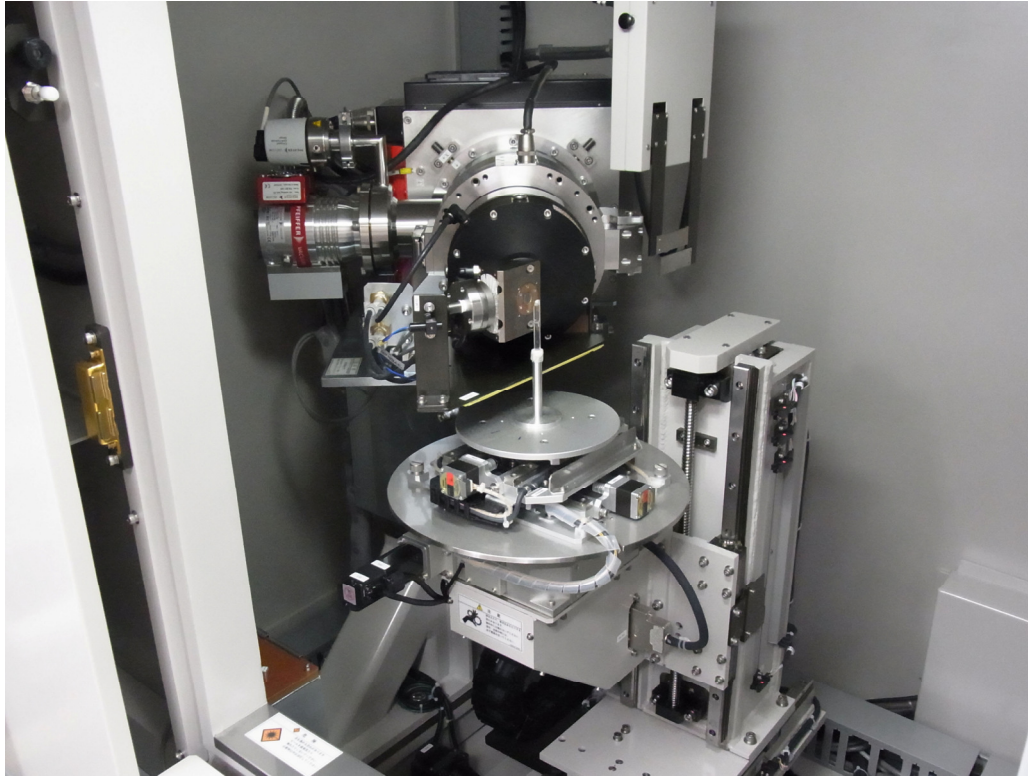


Figure 1. Representative view of an enamel specimen positioned on the turntable in the micro-CT apparatus.

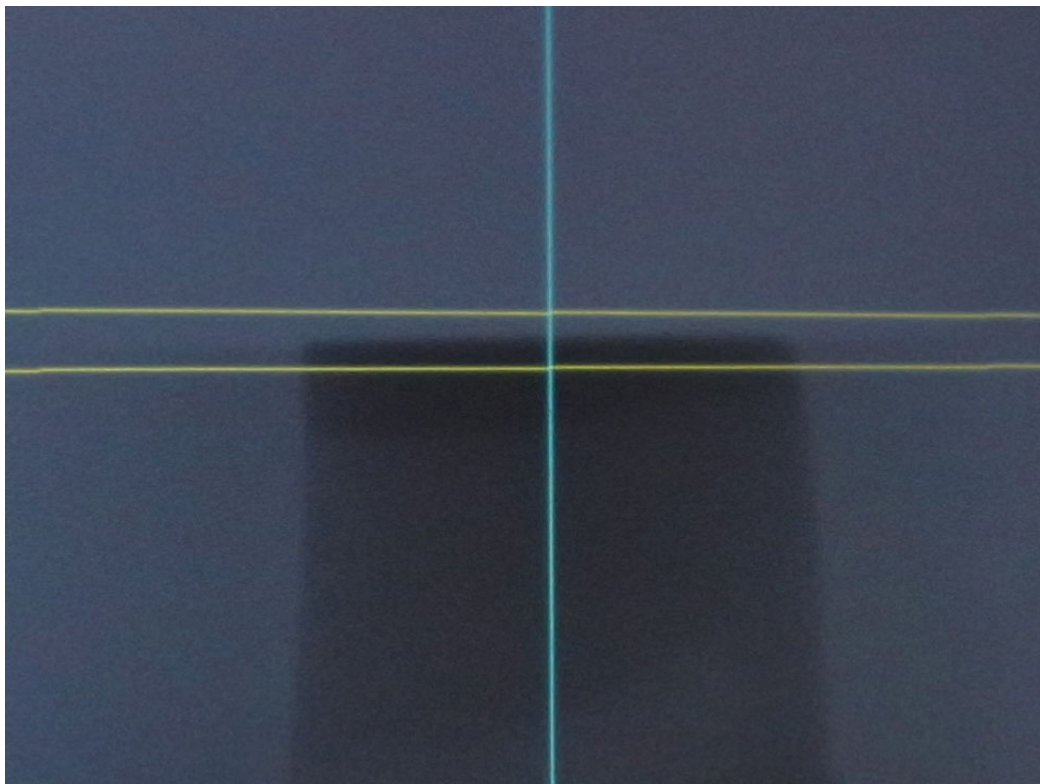


Figure 2. Two lines showing the X-ray FOV in the vertical position.

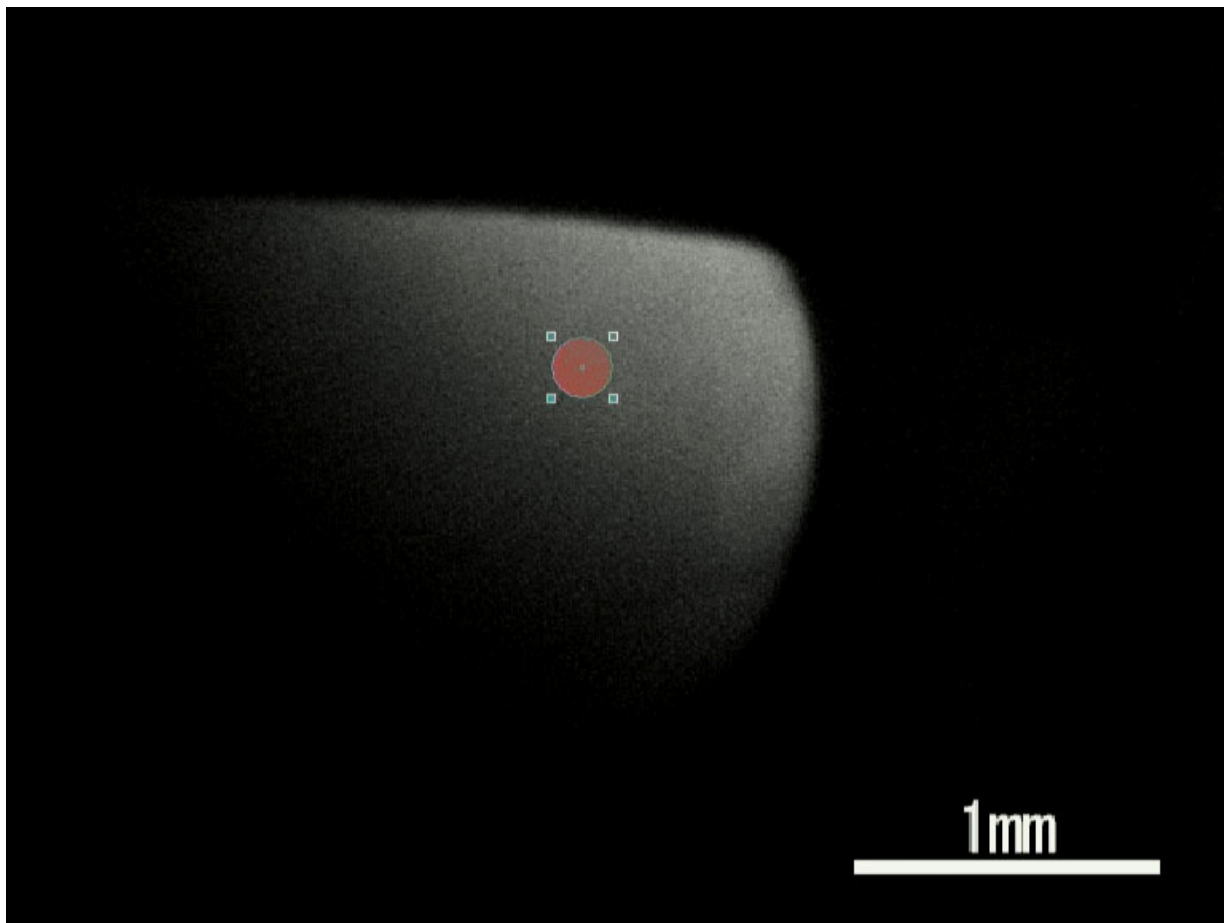


Figure 3. ROI is composed of 664 pixels in the horizontal position.

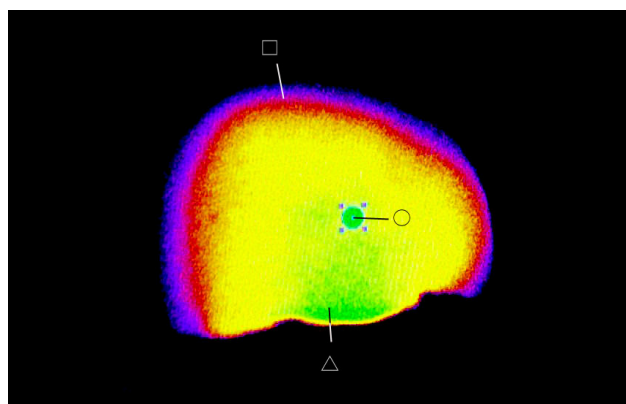


Figure 4. Within the yellow-shaded area, a randomly selected ROI (small green circle) is shown. Also shown are beam-hardening (purple outline) and ring (green in the center) artifacts.

and lesions treated with Clinpro Tooth Crème at z1 through z6 (Figure 5). At these slice depths, the mean density values of lesions treated with Clinpro Tooth Crème were significantly higher ($p < 0.05$) as compared to

the baseline WSL. With respect to comparisons between baseline WSL and lesions treated with Clinpro 5000 (Figure 6), the mean density of lesions treated with Clinpro 5000 was significantly higher ($p < 0.05$) than the baseline WSL at z1, z2, z3 and z4 slice depths. Comparisons of mean density values versus slice depth between baseline WSL and lesions treated with Tom's of Maine (Figure 7) revealed the density values were significantly higher ($p < 0.05$) at z1 through z5 for lesions treated with Tom's of Maine.

Density versus slice depth comparison among WSL treated with each of the toothpastes

Comparison of the mean densities at each slice depth for WSL treated with each of the three toothpastes is as shown in Figure 8. At z1, Clinpro Tooth Crème and Clinpro 5000 were not significantly different ($p = 0.91$), but were both superior to the fluoride-free Tom's of Maine ($p = 0.04$ and 0.01 , respectively). Similarly, at z2, Clinpro Tooth Crème and Clinpro 5000 were not significantly different ($p = 0.99$) but again were both superior to the

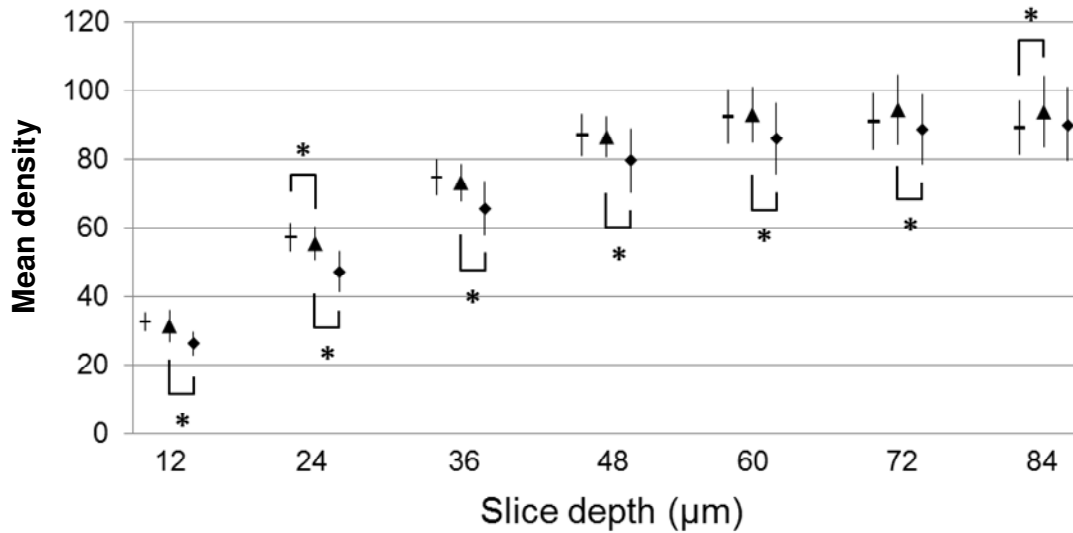


Figure 5. Mean density (standard deviation) versus slice depth for white-spot lesions treated with Clinpro Tooth Crème (B, ▲) and baseline sound enamel (-) and baseline white-spot lesions (◆). Asterisks (*) mark significant differences.

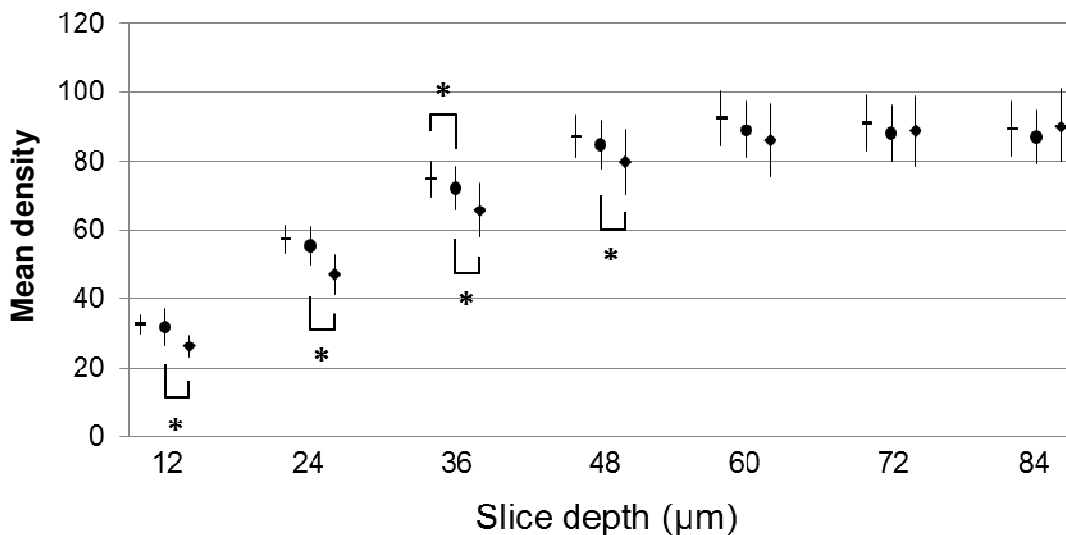


Figure 6. Mean density (standard deviation) versus slice depth for white-spot lesions treated with Clinpro 5000 (C, ●) and baseline sound enamel (-) and baseline white-spot lesions (◆). Asterisks (*) mark significant differences.

fluoride-free Tom's of Maine ($p=0.0009$ and 0.0004 , respectively). At z3, Clinpro Tooth Crème was found to be statistically superior to Tom's of Maine ($p=0.01$), but statistically similar to Clinpro 5000 ($p=0.63$), which was not significantly different compared to Tom's of Maine ($p=0.08$). No significant differences were observed among the three toothpastes at z4 or z5. At z6, Clinpro Tooth Crème was found to be significantly different compared to Clinpro 5000 ($p=0.002$), but Clinpro Tooth Crème and Clinpro 5000 were not significantly different

compared to Tom's of Maine ($p=0.28$ and 0.11 , respectively). At z7, Clinpro Tooth Crème and Tom's of Maine were not significantly different from one another ($p=0.68$) but were each significantly different than Clinpro 5000 ($p=0.001$ and 0.01 , respectively).

DISCUSSION

This study utilized micro-CT as a tool to characterize the

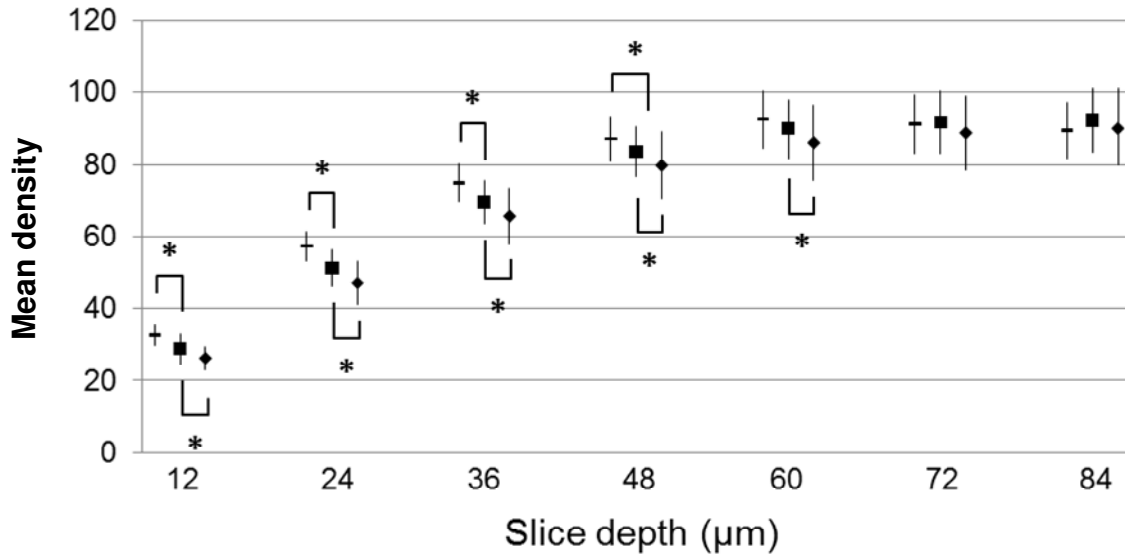


Figure 7. Mean density (standard deviation) versus slice depth for white-spot lesions treated with Tom's of Maine baseline (A, ■) and baseline sound enamel (-) and baseline white-spot lesions (♦). Asterisks (*) mark significant differences.

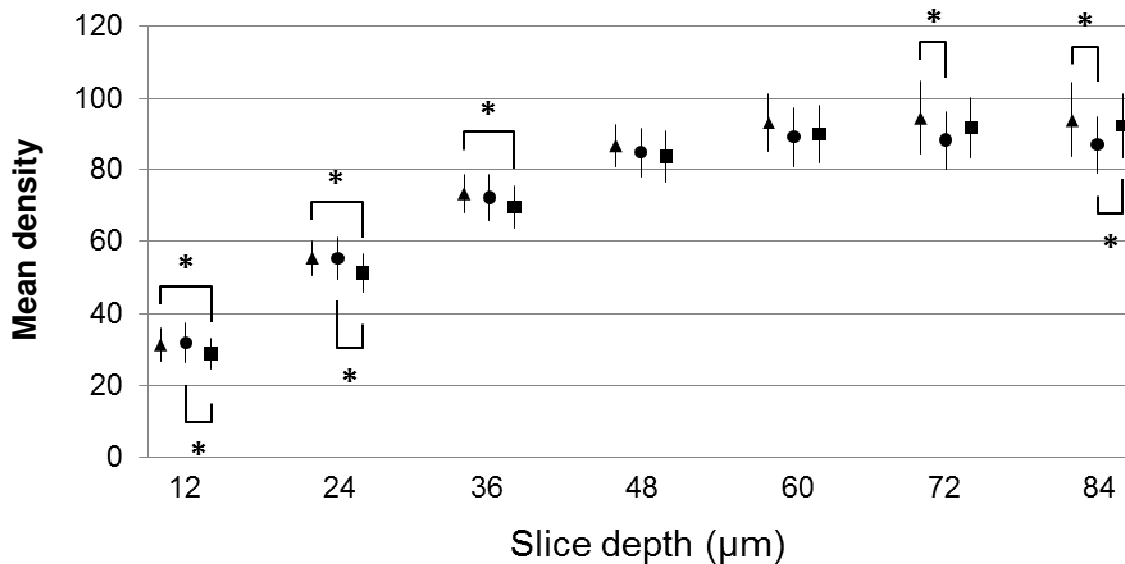


Figure 8. Mean density (standard deviation) versus slice depth for white-spot lesions treated with Tom's of Maine (A, ■) and Clinpro Tooth Crème (B, ▲) and Clinpro5000 (C, ●). Asterisks (*) mark significant differences.

response of incipient lesions subjected to a 10-day pH cycling model manifesting remineralization and demineralization periods and treated with one of three toothpastes. Among the elemental constituents of enamel, calcium is present in the largest concentration (Cate et al., 1988) and is most sensitive to X-ray absorption (Wildenschild et al., 2002). The loss of calcium during initial demineralization of enamel to create the 70 µm-deep lesion accompanies the loss of other enamel constituents as

well, including phosphate, carbonate and hydroxyl groups. Micro-CT has previously been used to probe such compositional changes (Watanabe et al., 2012; Wong et al., 2004). Additionally, the exposure to acid challenges, different toothpaste treatments and remineralization periods in simulated saliva solutions in a pH cycling model leads to chemical and physical changes of the lesion framework (Watanabe et al., 2012).

An important result of this study was that micro-CT

resolved significant differences between either baseline WSL or sound enamel and lesions treated without or with fluoride from three different toothpastes. As shown in Figures 5 to 7, the densities of WSL exposed to the different treatments in the pH cycling model manifest positions between sound and softened (that is, WSL) enamel. With respect to the densities of baseline WSL, each of the toothpastes produced increased densities when evaluated in the 10-day remineralization model. This result demonstrates that the artificial saliva solution encourages remineralization by virtue of its ionic constituents and is consistent with the important role that natural saliva has on the remineralization and/or protection against demineralization of the dentition (Stokey, 2008). But in WSL treated with each of three dentifrices, significant differences were observed as shown in Figure 8. In particular, within the first 25 μm (that is, z1 and z2) of the approximately 70 μm -deep lesion, both fluoride toothpastes produced greater densities relative to the fluoride-free Tom's of Maine toothpaste. Because integration of fluoride with the tooth structure improves resistance to demineralization (Karlinsky et al., 2010a) it is possible that the lesions treated with the fluoride-free paste succumbed more readily to the daily acid challenges as compared to the two fluoride pastes. Alternately, the lesions treated with fluoride may have increased in density due to the formation of fluoridated mineral such as fluorapatite or calcium fluoride (Cate and Rempt, 1986). Due to the pharmacokinetics of fluoride, its penetration into enamel is limited and decreases exponentially with enamel depth (Stearns, 1970). It may be possible that the functionalized TCP present in the Clinpro dentifrices helps extend the depth of fluoride penetration, and therefore lesion remineralization (Karlinsky et al., 2010d; Mensinkai et al., 2012), as evidenced by Clinpro Tooth Crème having a statistically significant density increase over baseline WSL from 12 to 72 μm . However, high fluoride levels can still restrict penetration depth even with TCP included, considering the Clinpro 5000 group only had statistically significant density increases over baseline WSL from 12 to 48 μm . The data in Figure 8 demonstrate that no significant differences in density among the three toothpastes were observed around 48 μm . Although some differences were observed beyond the bottom of the 70 μm lesion and into sound enamel, these densities are on par with those for sound enamel and it may be possible that the observed differences might be attributed to possible leaching or redistribution of mineral constituents due to penetration of acid during the acid challenge.

Compared with sound enamel at z2 (that is, $\sim 24 \mu\text{m}$) no significant differences in WSL density were observed with Clinpro 5000, while the density for Clinpro Tooth Crème was significantly lower. This observation suggests Clinpro 5000, which contains 1.1% NaF, delivers remineralization benefits at the surface of the WSL better than the 0.21% NaF Clinpro Tooth Crème. Since the densities of

lesions treated with Clinpro 5000 were similar to those of sound enamel down to 24 μm , this result suggests the rapid reaction kinetics and concentration of fluoride from the high-fluoride dentifrice manifests limitations to the extent of subsurface remineralization relative to a lower fluoride level (that is, Clinpro Tooth Crème). At z3 (that is, $\sim 36 \mu\text{m}$) the density of Clinpro 5000 was significantly lower, and trended lower at subsequent depths. This response suggests that high-fluoride Clinpro 5000 may have limited penetration into WSL, a position that is consistent with characteristics of high-fluoride treatments (Tavss et al., 2003), and is also consistent with a previous report on WSL treated with Clinpro 5000 and analyzed using transverse micro-radiography (TMR) (Karlinsky et al., 2011a). And in the absence of fluoride, there exists an increased susceptibility for enamel dissolution, which appears to contribute to the markedly lower densities at z1 through z4 for lesions treated with fluoride-free Tom's of Maine relative to sound enamel.

The comparison between baseline sound enamel and the WSL treated with each of the pastes was performed to assess the degree to which each toothpaste remineralized incipient enamel lesions. These comparisons suggest fluoride assists in mineral integration, and subsequently affects the bonding environments of enamel constituents, especially with respect to calcium. Based on previous research of surface and subsurface enamel strengthening (Karlinsky and Pfarrer, 2012; Karlinsky et al., 2010b), it is possible that the functionalized TCP ingredient in the Clinpro Tooth Crème and Clinpro 5000 contributes to the observed density measurements; however, additional studies, including those involving fluoride dentifrice without functionalized TCP, would be needed to further understand the nature of these effects. In any case, these observations suggest micro-CT might be useful in resolving effects due to different treatments. As such, studies incorporating different laboratory models that include treatments from dental preparations with various fluoride concentrations and/or other agents could be investigated. Additionally, studies involving lesions of various depths and porosities could be performed to further assess the sensitivity of micro-CT.

Conclusion

Micro-CT was used to assess the remineralization of combination dentifrices having fluoride and functionalized TCP, with both dentifrice systems leading to WSL densities approaching those of sound enamel. Additionally, observations regarding the extent of remineralization with respect to fluoride concentrations were also made. Although the pH cycling model employed in this study has clinical relevance (Karlinsky et al., 2010d; O'Reilly and Featherstone, 1987), a pilot clinical study should be performed to strengthen support for clinical recommendations.

ACKNOWLEDGEMENTS

The authors specially thank Sunao Sugimoto, Chief Manager of Advanced Composite Technology Center (JAXA) and Junko Aoki, technical support worker of IHI Jet Service Co., Ltd. for performing micro-CT. Toscaner – 30000 μhd^{\circledR} was used in the Facilities Utilization Program (JAXA). Dr. Karlinsey is the CEO and Mr. Mackey is the quality director of Indiana Nanotech, which has a commercial relationship with 3M ESPE and whose products were investigated in this manuscript. Drs. Asaizumi, Kato and Kuga report no commercial, proprietary, or financial interest in the products or companies described in this article.

REFERENCES

- Amaechi BT, Ramalingam K, Mensinkai PK, Chedjieu I (2012). *In situ* remineralization of early caries by a new high-fluoride dentifrice. *Gen. Dent.* 60(4):e186-192.
- Bagramian RA, Garcia-Godoys F, Volpe AR (2009). The global increase in dental caries. A pending public health crisis. *Am. J. Dent.* 22(1): 3-8.
- Cate JM, Rempt HE (1986). Comparison of the *in vivo* effect of a 0 and 1,500 ppmF MFP toothpaste on fluoride uptake, acid resistance and lesion remineralization. *Caries Res.* 20(3):193-201.
- Cate JM, Timmer K, Shariati M, Featherstone JDB (1988). Effect of Timing of Fluoride Treatment on Enamel De- and Remineralization *in vitro*: A pH-Cycling Study. *Caries Res.* 22:20-26.
- Karlinsey RL, Mackey AC, Stookey GK (2009b). *In vitro* remineralization efficacy of NaF systems containing unique forms of calcium. *Am. J. Dent.* 22(3):185-188.
- Karlinsey RL, Mackey AC, Stookey GK, Pfarrer AM (2009a). *In vitro* assessments of experimental NaF dentifrices containing a prospective calcium phosphate technology. *Am. J. Dent.* 22(3):180-184.
- Karlinsey RL, Mackey AC, Walker ER, Amaechi BT, Karthikeyan R, Najibfard K, Pfarrer AM (2010c). Remineralization potential of 5,000 ppm fluoride dentifrices evaluated in a pH cycling model. *J. Dent. Oral Hyg.* 2(1):1-6.
- Karlinsey RL, Mackey AC, Walker ER, Frederick KE (2010a). Surfactant-modified β -TCP: Structure, properties, and *in vitro* remineralization of subsurface enamel lesions. *J. Mater. Sci. Mater. Med.* 21(7):2009-2020.
- Karlinsey RL, Mackey AC, Walker ER, Frederick KE (2010b). Surfactant-modified β -TCP structure, properties, and *in vitro* remineralization of subsurface enamel lesions. *J. Mater. Sci. Mater. Med.* 21(7):2009-2020.
- Karlinsey RL, Mackey AC, Walker ER, Frederick KE (2010d). Enhancing remineralization of subsurface of enamel lesions with functionalized β -TCP. *Biomaterials Developments and Applications.* In Bourg H, Lisle A (eds.), © Nova Science Publishers, Inc. pp. 353-374.
- Karlinsey RL, Mackey AC, Walker TJ, Frederick KE, Blanken DD, Flaig SM, Walker ER (2011a). *In vitro* remineralization of human and bovine white-spot lesions by NaF dentifrices: A pilot study. *J. Dent. Oral. Hyg.* 3(2):22-29.
- Karlinsey RL, Pfarrer AM (2012). Fluoride Plus Functionalized β -TCP: A Promising Combination for Robust Remineralization. *Adv. Dent. Res.* 24(2):48-52.
- Mensinkai PK, Ccahuana-Vasquez RA, Chedjieu I, Amaechi BT, Mackey AC, Walker TJ, Blanken DD, Karlinsey RL (2012). *In situ* remineralization of white-spot enamel lesions by 500 and 1,100 ppm F dentifrices. *Clin. Oral Investig.* 16(4):1007-1014.
- Mitchell L (1992). Decalcification During Orthodontic Treatment With Fixed Appliances-An Overview. *Br. J. Orthod.* 19(3):199-205.
- Nakata K, Nikaido T, Nakashima S, Nango N, Tagami J (2012). An approach to normalizing micro-CT depth profiles of mineral density for monitoring enamel remineralization progress. *Dent. Mater. J.* 31(4):533-540.
- Nordström A, Birkhed D (2009). Fluoride Retention in Proximal Plaque and Saliva Using Two NaF Dentifrices Containing 5,000 and 1,450 ppm F with and without Water Rinsing. *Caries Res.* 43:64-69.
- O'Reilly MM, Featherstone JDB (1987). Demineralization and remineralization around orthodontic appliances: An *in vivo* study. *Am. J. Orthod. Dentofacial Orthop.* 92:33-40.
- Stearns RI (1970). Incorporation of Fluoride by Human Enamel: I. Solid-State Diffusion Process. *J. Dent. Res.* 49:1444-1451.
- Stookey GJ (2008). The effect of saliva on dental caries. *J. Am. Dent. Assoc.* 139:11S-17S
- Tavss EA, Mellberg JR, Joziak M, Gambogi RJ, Fisher SW (2003). Relationship between dentifrice fluoride concentration and clinical caries reduction. *Am. J. Dent.* 16(6):369-374.
- Watanabe K, Nakamura T, Ogihara T, Ochiai Y, Watanabe S (2012). Longitudinal evaluation of mineral loss at the earliest stage of enamel demineralization using micro-computed tomography. *Health* 4(6):334-340.
- White DJ (1987). Reactivity of Fluoride Dentifrices with Artificial Caries I. Effects on Early Lesions: F Uptake, Surface Hardening and Remineralization. *Caries Res.* 21:126-140.
- Wildenschild D, Hopmans JW, Vaz CMP, Rivers ML, Rikard D, Christensen BSB (2002). Using X-ray computed tomography in hydrology: systems, resolutions, and limitations. *J. Hydrol.* 267:285-297.
- Wong FSL, Anderson P, Fan H, Davis GR (2004). X-ray microtomographic study of mineral concentration distribution in deciduous enamel. *Arch. Oral Biol.* 49:937-944.

UPCOMING CONFERENCES

19th International Symposium on Dental Hygiene, Cape Town, South Africa, 14 Aug 2013



***American Academy of Otolaryngology-Head and Neck Surgery,
September 29, 2013, Canada***



Conferences and Advert

August 2013

19th International Symposium on Dental Hygiene, Cape Town, South Africa, 14 Aug 2013

September 2013

American Academy of Otolaryngology-Head and Neck Surgery, September 29, 2013, Canada

Journal of Dentistry and Oral Hygiene

Related Journals Published by Academic Journals

- *Journal of Medicinal Plant Research*
- *Journal of Parasitology and Vector Biology*
- *Clinical Reviews and Opinions*
- *Journal of AIDS and HIV Research*
- *Journal of Cell Biology and Genetics*
- *Medical Practice and Reviews*

academicJournals